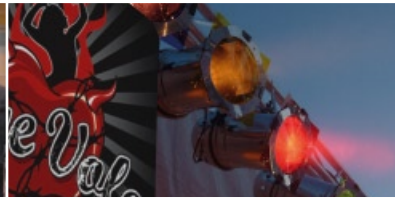
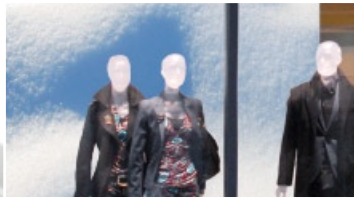
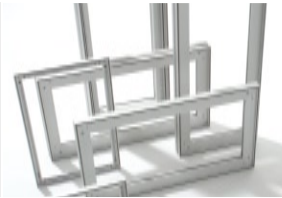


It's
kind of **Magic**



prime **x** frame™



Flexibility

■ SIZE

19' long profiles can be cut to any desired length. Extension plug-ins offer even bigger formats.

■ USAGE

Select your suitable aluminum profile!

BIG for single-sided large wall applications (starting from 20 - 30 sqft / 2 - 3 m²), cupboard / shelf casings

DOUBLE for double-sided stands, room dividers, hanging systems

BASIC for single-sided, smaller wall applications, cupboard / shelf casings

BACKLIT for illuminated graphics



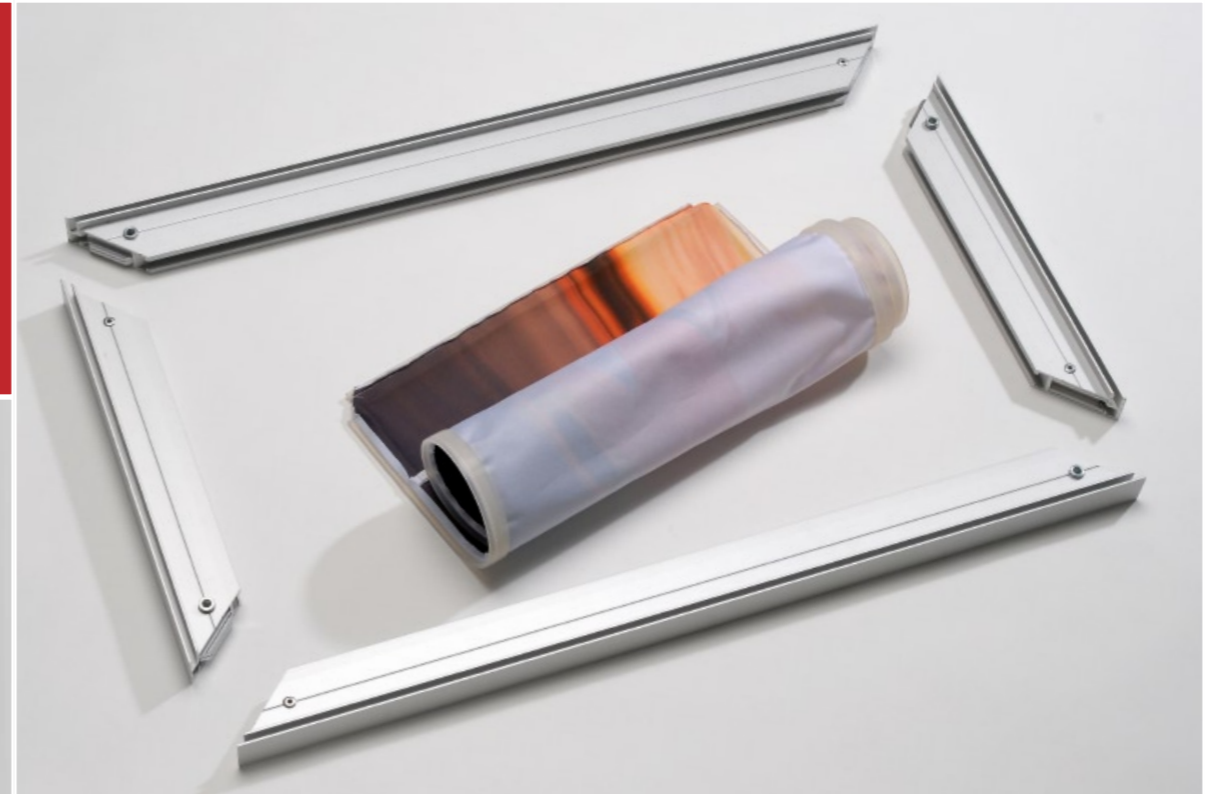
■ HANDLING

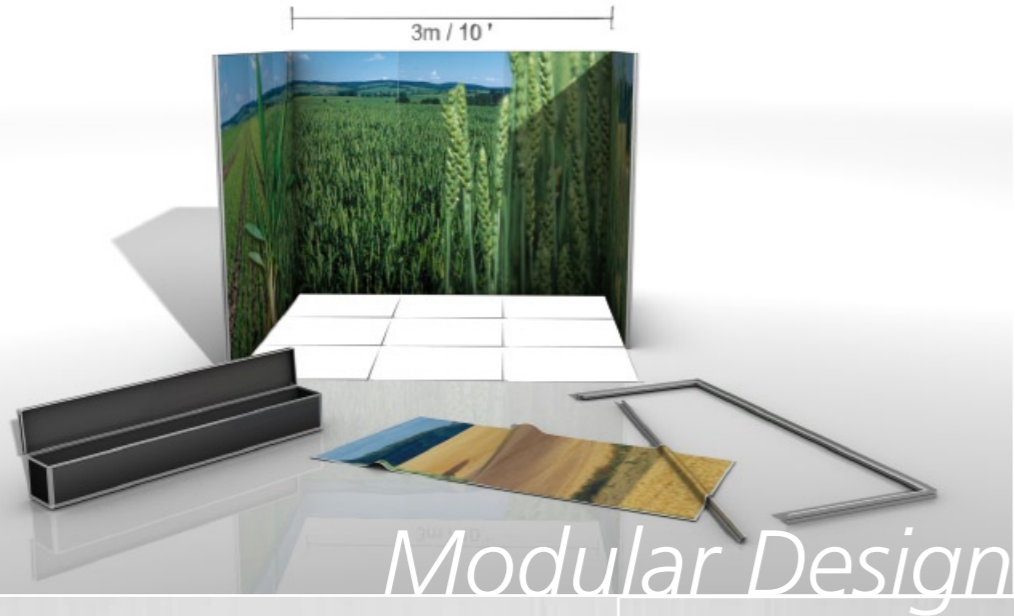
The smart frame-and-lock system provides quick assembly, easy graphics change-out and reduces shipping costs and damage risk. By splitting big formats into smaller profiles with extension-plugs, shipping costs can be further reduced.

■ PrimexFrame systems have a very useful additional effect: **acoustic dampening**.

Wherever you want to reduce the surrounding noise level, the sound absorbing textile prints can make a huge difference. To increase the effect, additional dampening materials can be installed within the inner channel of the frame.

Noise absorption





Modular Design

■ location: tradeshow
 function: 10' x 10' booth backwall
 specifications: 9 DOUBLE frames, 39.4" x 92.5"

■ The PrimexFrame system has a unique advantage: modular usage!
 By purchasing a set of frame profiles you get the ability to combine them to a wide variety of applications.

- For example:
- set up a tradeshow booth 10x10' / 3x3m
 - after the tradeshow, convert your profiles into a convention backwall or
 - use them for customer POS or
 - set up inhouse information displays
 - take the short profiles and turn them into wall decoration or
 - add a curved look to your design by only purchasing two more profiles



■ location: convention
 function: backwall
 specifications: DOUBLE frames, 39.4" x 92.5"



■ location: lobby
 function: information display
 specifications: DOUBLE frames, 39.4" x 92.5"

■ location: mall
 function: POS
 specifications: DOUBLE frames, 39.4" x 92.5"





■ location: coffeeshop
function: menu display
specifications: DOUBLE profiles, 22" x 45"

■ location: museum
function: signpost, information display
specifications: DOUBLE profiles, 22" x 45"



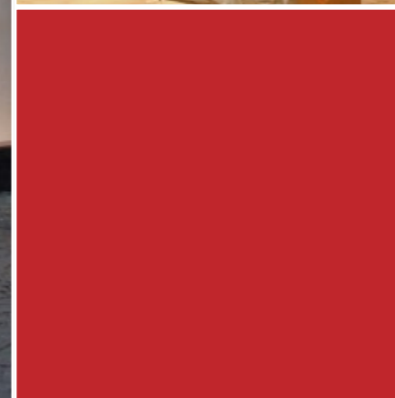
■ location: museum
function: signpost, information display
specifications: DOUBLE profiles, 22" x 45",
special color: gold powder coating



■ location: fashion boutique
function: showcase decoration
specifications: BIG profiles, 98" x 110"



■ location: retailer
function: hanging shop decoration
specifications: DOUBLE profiles, 32" x 60"



■ location: showroom
function: hanging decoration
specifications: DOUBLE profiles, 52" x 52"



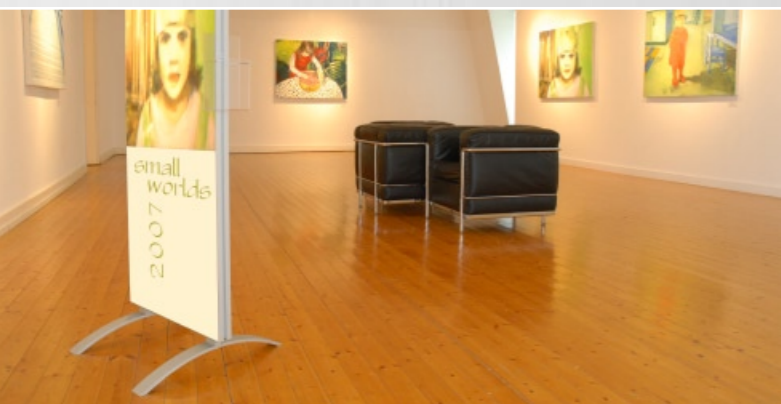
■ location: mall
 function: information display, signpost
 specifications: BIG profiles, 181" x 87"

■ location: auditorium
 function: projection screen
 specifications: BIG profiles equipped with a special projection fabric, 160" x 120"

■ location: tradeshow
 function: illuminated booth backwall
 specifications: BACKLIT profiles, 53" / 39" x 91"

■ location: museum
 function: information display, signpost
 specifications: DOUBLE profiles with curved feet, 31" x 63"

■ location: onstage
 function: loudspeaker cover
 specifications: BASIC profiles, 20" x 32"



■ location: lounge
 function: illuminated wall decoration
 specifications: BACKLIT profiles, 60" x 39"





www.primex-displays.com